



Paul Pieri



Wantage

£425,000

Oxfordshire





- Four-bedroom semi-detached house with a study and garage
- Semi open plan kitchen/dining room
- Attractive views to front
- No onward chain
- Utility room

## Wantage

£425,000

Recently refurbished four-bedroom semi-detached family home with off-street parking and adjacent single garage, and views to the front across public open space. The ground floor has a semi open plan L shaped kitchen /dining room where access is found to the downstairs cloakroom and the small study. There is also a separate sitting room on the ground floor and entrance hall with stairs rising to first floor. Upstairs are four bedrooms and separate bathroom and WC. This spacious house has been re-decorated throughout, has a brand-new kitchen, bathroom and downstairs WC and has been re-carpeted throughout in recent years. At the rear of the house is a sloped garden with steps rising to raised lawn behind a brick retaining wall. Within the garden are a number of flower borders and small mature trees. There is a lawn garden at the front of the house flanked by a hard standing driveway providing off-street parking. (Photos used from our archives.)



For more information or to arrange a viewing please contact:

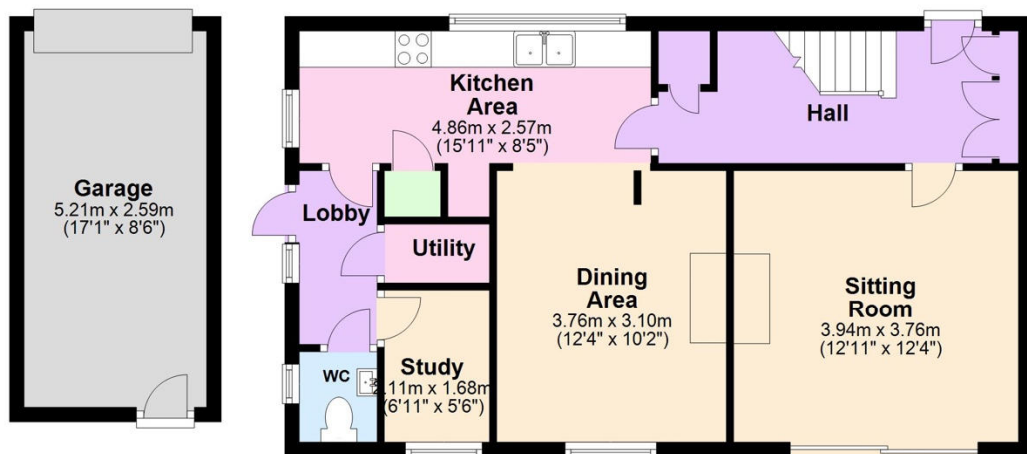
**Wantage**  
3b Newbury Street  
Wantage  
Oxfordshire, OX12 8BU

**Sales**  
Tel 01235 763611  
Email sales@paulpieri.co.uk  
Web www.paulpieri.co.uk



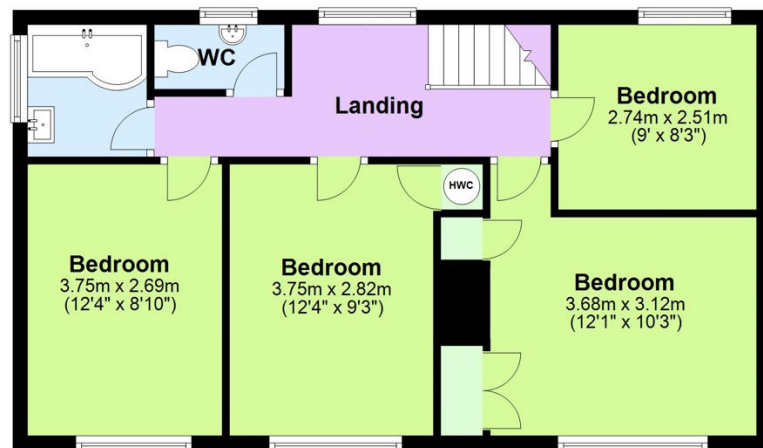
### Ground Floor

Approx. 55.9 sq. metres (601.8 sq. feet)



### First Floor

Approx. 57.6 sq. metres (619.8 sq. feet)



Total area: approx. 113.5 sq. metres (1221.5 sq. feet)

Every attempt has been made to ensure the accuracy of this floor plan. Measurements of doors, windows and rooms are approximate for indicative purposes only. No responsibility is taken for any error, omission, or misstatement. Specifically, no guarantee is given on the total square footage of the property if provided and figures are given for guidance purposes only and must not be relied on as a basis of valuation.  
Plan produced using PlanUp.

